



## FERNDALE HOMES PHASE-2

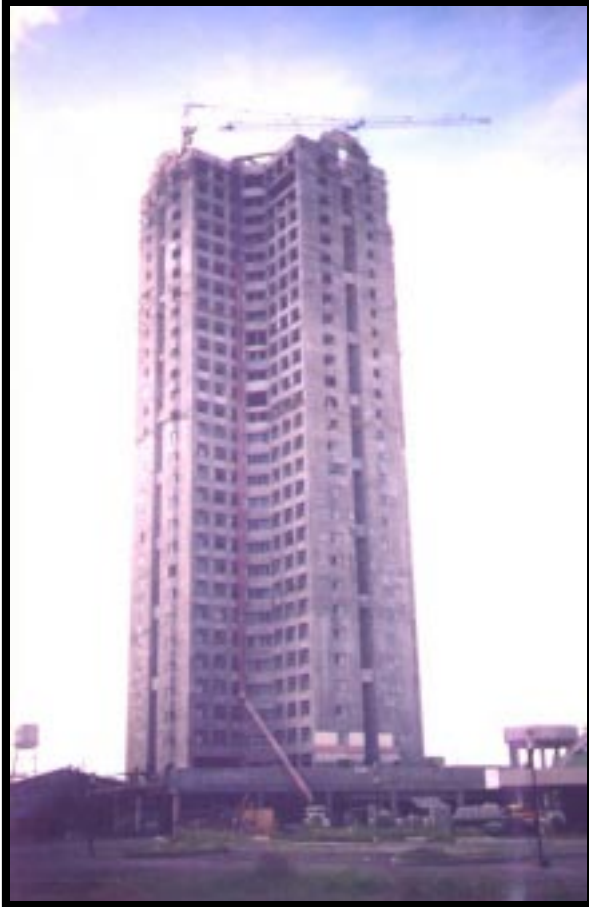
*The second phase of this nine-phase residential project of Ayala Land, Incorporated located in Fairview, Quezon City. Each of the 58 houses are adorned with various types of precast to accentuate the Mediterranean-inspired design.*

### *Items of Work:*

*Precast Concrete (PC) Door and Window Mouldings  
 PC Fire Wall Mouldings  
 PC Potshelf  
 PC Kitchen Sink  
 PC Corbels  
 PC Window Casing  
 Glass Fiber Reinforced Concrete (GFRC) False Window Shutters*

|            |                             |
|------------|-----------------------------|
| Designer   | R. Mercado and Associates   |
| Contractor | Summa Kumagai, Incorporated |
| Consultant | Rider Hunt Liacor           |
| Owner      | Ayala Land, Incorporated    |





## OLYMPIC HEIGHTS TOWER

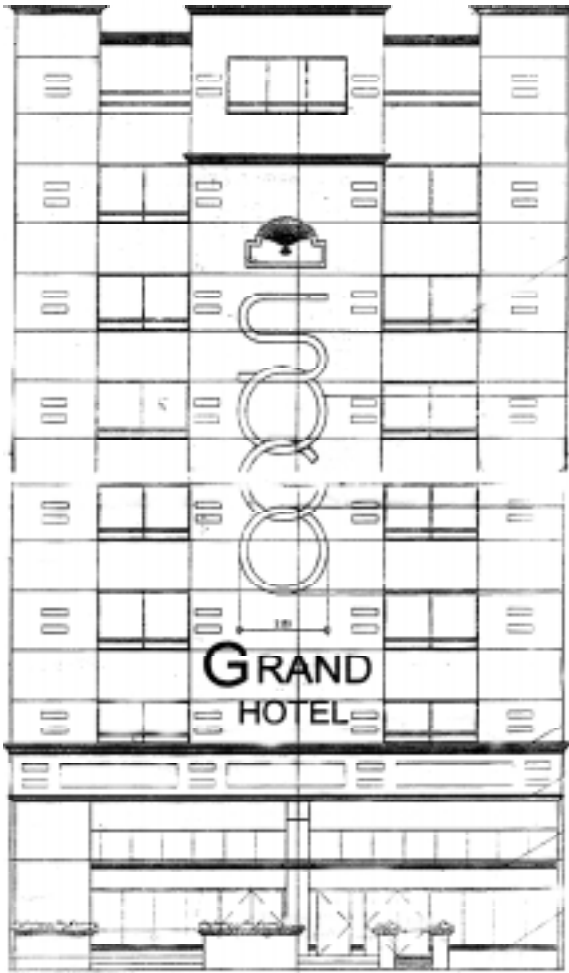
*A 32-storey, 3-Tower residential/commercial condominium located at Eastwood Center in Libis, Quezon City. The gazebos, garden floor and ground floor levels will soon be adorned with various precasts to bring out a classical look as designed by Architect Leslie E. Roberts and Associates.*

### *Items of Work:*

|                           |  |
|---------------------------|--|
| <i>Garden Floor Level</i> | <i>Precast Concrete (PC) Mouldings</i> |
|                           | <i>PC Plant Boxes</i>                  |
| <i>Gazebo</i>             | <i>PC Ballusters and Railings</i>      |
|                           | <i>PC Mouldings</i>                    |
|                           | <i>PC Circular Column Claddings</i>    |
| <i>Machine Room Lvl</i>   | <i>PC Mouldings</i>                    |
| <i>Ground Floor</i>       | <i>PC Circular Column Claddings</i>    |

|            |                                  |
|------------|----------------------------------|
| Designer   | M&E Group of Architects          |
| Contractor | New City Builders, Incorporated  |
| Consultant | Leslie E. Roberts and Associates |
| Owner      | Megaworld – Daewoo Corporation   |





## SOGO GRAND HOTEL, GUADALUPE

*This soon to rise edifice along EDSA, Guadalupe is the second branch of the Sogo Grand Hotel chain in the Philippines. Different precast mouldings will be installed on several floor levels to further enhance the exterior appearance and provide a look distinct to the hotel.*

### *Items of Work:*

*Precast Concrete Mouldings along the:*

*Plant Boxes*

*Mezzanine Parapet*

*Second Floor Parapet*

*Seventh Floor Parapet*

*Roof Deck Parapet*

Designer  
Contractor  
Owner

Ed Mariano and Associates  
New City Builders, Incorporated  
Sogo Grand Hotel